

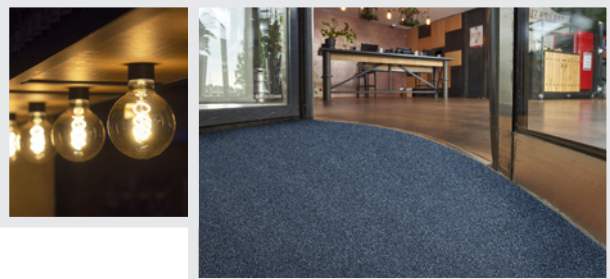


# Volante Luxury, moisture- absorbent walk-off carpet

Also available with Pura Backing™

ECONYL®

| Type      | Use    | Traffic | Mat Matrix |
|-----------|--------|---------|------------|
| Absorbent | Indoor | High    | C          |



**Volante is a luxurious, absorbent, walk-off entrance carpet in a mottled design, with high moisture absorption for high-traffic commercial environments.**

### Design

Volante has the image of cotton. The highly friséed, springy, cut pile gives this mat a lively texture with a soft-grained feel. In addition to the classic colours of blue, red and granite, there are three brown tones in the palette. These colours complement wood tones in the interior, whether red wood types (like mahogany) or greyish (like oak). Anthracite works well with natural stone floors.

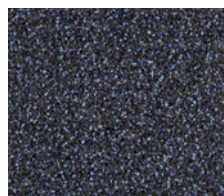


Wood warm red herringbone  
with Volante mahogany

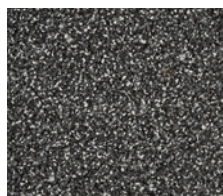
### Matching all floors

Our designers develop colourways that complement every interior style. For ambiances ranging from classic to modern design. The broad Rinos range always has the right solution, to complement both interior design and floor type. **Make your own combination on our website and be inspired by our options.**

## Colours



**Blue**  
706  
NCS: 8010R70B



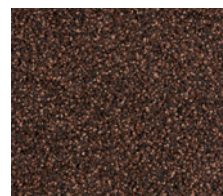
**Anthracite**  
700  
NCS: 7502B



**Brown**  
702  
NCS: 8005Y80R



**Granite**  
705  
NCS: 8500N



**Mahogany**  
704  
NCS: 8010Y90R



**Red**  
709  
NCS: 6030R10B




**Terra**  
703  
NCS: 7020Y80R

## Specifications

### PVC

### PURA<sup>BACKING</sup>

|  |  |  |
|--|--|--|
| Pile material                            | 100% regenerated ECONYL <sup>®</sup> Polyamide           | 100% regenerated ECONYL <sup>®</sup> Polyamide           |
| Pile weight ISO 8543                     | ca. 950 g/m <sup>2</sup>                                 | ca. 950 g/m <sup>2</sup>                                 |
| Use classification EN 1307               | 32   | 32   |
| Flammability Euroclass EN 13501          | Cfl-s1   | Cfl-s1   |
| Sizes rolls (w*I) ***                    | 135 cm/ 20 m <sup>1</sup> ,<br>200 cm/ 20 m <sup>1</sup> | 135 cm/ 20 m <sup>1</sup> ,<br>200 cm/ 20 m <sup>1</sup> |
| Sizes mats (w*I) ***                     | 60*90, 90*150, 135*200 cm                                | 60*90, 90*150, 135*200 cm                                |
| Backing                                  | Phtalate-free PVC  | PU   |
| Sand absorption class*                   | 1  | 1  |
| Optical class**                          | 3,5  | 3,5  |
| Absorption capacity TNO W6034            | 6,2 l/m <sup>2</sup>                                     | 6,2 l/m <sup>2</sup>                                     |
| Total weight ISO 8543                    | ca. 3.800 g/m <sup>2</sup>                               | ca. 3.100 g/m <sup>2</sup>                               |
| Pile height ISO 1766                     | ca. 6,0 mm   | ca. 6,0 mm   |
| Total height ISO 1765                    | ca. 8,0 mm   | ca. 8,0 mm   |
| Pile density ISO 8543                    | 0,132 g/cm <sup>2</sup>                                  | 0,132 g/cm <sup>2</sup>                                  |
| Number of stitches ISO 1763              | ca. 114.200 /m <sup>2</sup>                              | ca. 114.200 /m <sup>2</sup>                              |
| Wearing class EN 1963                    | 32   | 32   |
| Comfort EN 1307                          | LC2  | LC2  |
| Dimensional stability ISO 2551           | <0,4 %   | <0,4 %   |
| Light fastness ISO 105 B02               | >7   | >7   |
| Water fastness ISO 105 B01               | 4 - 5  | 4 - 5  |
| Rubbing fastness ISO 105 X12             | 4 - 5  | 4 - 5  |
| Salt water ISO 105 E02                   | 4 - 5  | 4 - 5  |
| Shampoo BS 1006                          | 4 - 5  | 4 - 5  |
| Organic solvents ISO 105 X05             | 4 - 5  | 4 - 5  |
| Static charge ISO 6356                   | -1,4 kV  | -1,4 kV  |
| Slip Resistance EN 13893                 | DS   | DS   |
| Yarn construction                        | Frisé  | Frisé  |
| Design                                   | Heathered  | Heathered  |
| Colours                                  | 7  | 7  |
| Suitability for stairs EN 1963           | Intensive use  | Intensive use  |
| Suitability for castor chairs EN 985     | Intensive use  | Intensive use  |
| Primary backing                          | nonwoven PET/PA  | nonwoven PET/PA  |
| Thermal resistance EN 12667              | 0,074 m <sup>2</sup> K/W                                 | 0,074 m <sup>2</sup> K/W                                 |
| Impact sound insulation EN 1307 annex D. | ≥ 20 dB  | ≥ 20 dB  |
| Colouring                                | Solution dyed  | Solution dyed  |
| Circularity index                        | 75 %   | 64 %   |

 Excluding loose-laid mats  
EN 14041:2004

\* Sand Absorption Class 3: ≥90%, Sand Absorption Class 2: 80% ≤ class 2 < 90%, Sand Absorption Class 1: ≤80% \*\* Optical Class: 5 is best, 1 is lowest \*\*\* All listed dimensions include a PVC edge of 2.5 cm. The roll lengths are an indication. Delivered length can be up to 15% higher or lower. Installation and maintenance advice is available on our website.

## PURA<sup>BACKING</sup>

Pura Backing™ is a unique Rinos product innovation, developed by our R&D department. It's the Rinos answer to increasing demand for more environmentally friendly and sustainable entrance mat solutions by avoiding the use of PVC and plasticisers. Mats with Pura Backing™ meet this requirement – with zero PVC and plasticiser content, avoiding stains on porous subfloors. Thanks to increased flexibility, it is even easier to install!

## Contact us for more information

Our employees are ready to answer questions or to take your orders. **Call +31 38 385 35 00** or **mail customerservice@rinos.com**

## Where to use?

|  | high traffic | medium traffic |
|--|--------------|----------------|
| Not combined with outdoor matting (scraping) | A            | B              |
| Combined with outdoor matting (absorbing)    | C            | D              |
| Outdoor matting                              | E            |                |

© Rinos B.V.

[rinos.com/products/volante](https://rinos.com/products/volante)