



Symphony2 Reduces your environmental footprint

Also available with Pura Backing™

ECONYL®

Type	Use	Traffic	Mat Matrix
Scraping	Indoor	High	A

Symphony2 is a scraper mat made of ECONYL® yarns in 10 natural colours, for heavy commercial use, also available with PVC-free Pura Backing.

Design

Symphony2 has a detailed, cut pile. The mat combines a stiff, black scraper fibre with a soft, multi-coloured yarn. This gives a terazzo-like, stone effect. The five shades of grey reflect urban environment tones, such as granite, asphalt, pebbles, cement and concrete paving. Symphony2 connects exterior and interior in buildings with open facades.



Wood warm red herringbone
with Symphony2 black grey

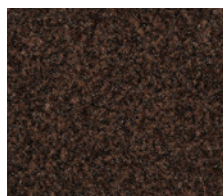
Matching all floors

Our designers develop colourways that complement every interior style. For ambiances ranging from classic to modern design. The broad Rinos range always has the right solution, to complement both interior design and floor type. **Make your own combination on our website and be inspired by our options.**

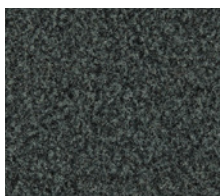
Colours



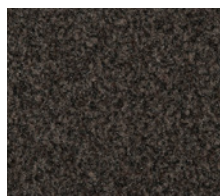
Brown beige
SY31
NCS: 6020Y20R



Chocolate brown
SY21
NCS: 8005Y50R



Granite grey
SY61
NCS: 7005G20Y



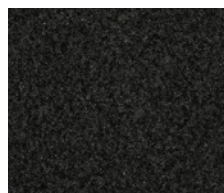
Grey brown
SY22
NCS: 8005Y20R



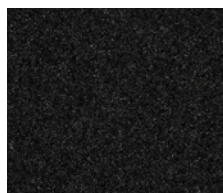
Quartz grey
SY11
NCS: 6502Y



Oxid red
SY91
NCS: 6030Y60R



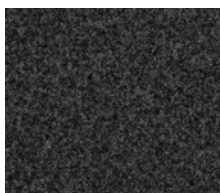
Signal black
SY81
NCS: 8502G



Traffic black
SY51
NCS: 8500N



Silver grey
SY83
NCS: 6502G




Black grey
SY82
NCS: 7502G

Specifications

PVC

PURA^{BACKING}

Pile material	100% recycled (ECONYL®) Polyamide	100% recycled (ECOLYL®) Polyamide
Pile weight ISO 8543	850 g/m ²	850 g/m ²
Use classification EN 1307	33	33
Flammability Euroclass EN 13501	Cfl-s1	Cfl-s1
Sizes rolls ***	135/200 cm, ± 20 m ¹	135/200 cm, ± 20 m ¹
Sizes mats***	60/90, 90/150, 135/200 cm	60/90, 90/150, 135/200 cm
Backing	PVC	PU
Sand absorption class*	3	3
Optical class**	4,5	4,5
Absorption capacity TNO W6034	± 5,6 l/m ²	± 5,6 l/m ²
Total weight ISO 8543	ca. 3.650 g/m ²	ca. 3.050 g/m²
Pile height ISO 1766	ca. 7,0 mm	ca. 7,0 mm
Total height ISO 1765	ca. 9,0 mm	ca. 9,0 mm
Pile density ISO 8543	0,110 g/cm ²	0,110 g/cm ²
Number of stitches ISO 1763	ca. 71.000 /m ²	ca. 71.000 /m ²
Wearing class EN 1963	33	33
Comfort EN 1307	LC2	LC2
Dimensional stability ISO 2551	< 0,3%	< 0,3%
Light fastness ISO 105 B02	7	7
Water fastness ISO 105 B01	4-5	4-5
Rubbing fastness ISO 105 X12	4-5	4-5
Salt water ISO 105 E02	4-5	4-5
Shampoo BS 1006	4-5	4-5
Organic solvents ISO 105 X05	4	4
Static charge ISO 6356	-0,4 kV	-0,4 kV
Slip Resistance EN 13893	DS	DS
Yarn construction	Velours	Velours
Design	Mixed	Mixed
Colours	10	10
Suitability for stairs EN 1963	Intensive use	Intensive use
Suitability for castor chairs EN 985	Intensive use	Intensive use
Primary backing	nonwoven PET/PA	nonwoven PET/PA
Declaration of Performance	Available	Available

 Excluding loose-laid mats
EN 14061:2004

* Sand Absorption Class 3: >=90%, Sand Absorption Class 2: 80% <= class 2 < 90%, Sand Absorption Class 1: <= 80% ** Optical Class: 5 is best, 1 is lowest *** All listed dimensions include a PVC edge of 2.5 cm. The roll lengths are an indication. Delivered length can be up to 15% higher or lower. Installation and maintenance advice is available on our website.

PURA^{BACKING}

Pura Backing™ makes walk-off entrance mats more sustainable by avoiding the use of PVC and plasticisers. It's the response to increasing demand by commercial and residential decorators for environmental sensitivity and sustainability, down to the last details – even when it comes to entrance mats. Mats with Pura Backing™ meet this requirement – with zero PVC and plasticiser content and a smaller environmental footprint, while being even easier to install!

Contact us for more information

Our employees are ready to answer questions or to take your orders. **Call +31 38 385 35 00** or mail customerservice@rinos.com

Where to use?

	high traffic	medium traffic
Not combined with outdoor matting (scraping)	A	B
Combined with outdoor matting (absorbing)	C	D
Outdoor matting	E	

© Rinos B.V.

rinos.com/products/symphony2