



## Grafic Eye for detail

Also available with Pura Backing™

ECONYL®

Type

Scraping

Use

Indoor

Traffic

High

Mat Matrix

A

**Grafic is a scraper walk-off entrance mat for high-traffic commercial applications, available in solid colours with a subtle, graphic pattern.**

### Design

Grafic's solid, dark grey, felt-like fabric is available in a range of printed designs. Choose an organic design, with a random pattern, like Stones. Or select one of four, geometric grid patterns – Rings, Squares, Comb and Grid. Squares is made up of small squares. With Grid, the spaces between the squares are printed. While Squares is a more solid design, Grid is more open and geometric. Comb is derived from honeycomb: a popular motif for upholstery fabrics, floor coverings and wallpaper.

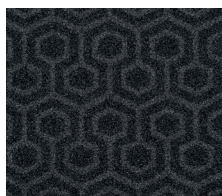


LVT brushed metal look steel with **Grafic squares**

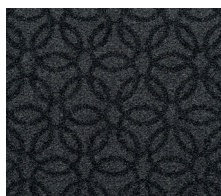
### Matching all floors

Our designers develop colourways that complement every interior style. For ambiances ranging from classic to modern design. The broad Rinos range always has the right solution, to complement both interior design and floor type. **Make your own combination on our website and be inspired by our options.**

## Patterns



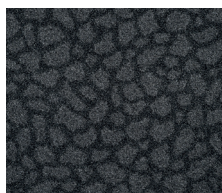
**Comb**  
064  
NCS: 8500N



**Rings**  
062  
NCS: 8500N



**Squares**  
063  
NCS: 8500N



**Stone**  
061  
NCS: 8500N




**Grid**  
065  
NCS: 8500N

## Specifications

### PVC

### PURA<sup>BACKING</sup>

Pile material	100% recycled (ECONYL®) Polyamide	100% recycled (ECONYL®) Polyamide
Pile weight ISO 8543	1.000 g/m²	1.000 g/m²
Use classification EN 1307	33	33
Flammability Euroclass EN 13501	Bfl-s1	Cfl-s1
Sizes rolls ***	205 cm, ± 20 m¹	205 cm, ± 20 m¹
Sizes mats***	NPD	NPD
Backing	PVC	<b>PU</b>
Sand absorption class*	3	3
Optical class**	4.5	4.5
Absorption capacity TNO W6034	± 4,8 l/m²	± 4,8 l/m²
Total weight ISO 8543	ca. 3.800 g/m²	<b>ca. 3.150 g/m²</b>
Pile height ISO 1766	ca. 7,0 mm	ca. 7,0 mm
Total height ISO 1765	ca. 9,0 mm	ca. 9,0 mm
Pile density ISO 8543	0,128 g/m²	0,128 g/m²
Number of stitches ISO 1763	ca. 86.800 /m²	ca. 86.800 /m²
Wearing class EN 1963	33	33
Comfort EN 1307	LC3	LC3
Dimensional stability ISO 2551	< 0,4%	< 0,4%
Light fastness ISO 105 B02	> 7 (scale 1-8)	> 7 (scale 1-8)
Water fastness ISO 105 B01	> 4 (scale 1-5)	> 4 (scale 1-5)
Rubbing fastness ISO 105 X12	> 4 (scale 1-5)	> 4 (scale 1-5)
Salt water ISO 105 E02	4	4
Shampoo BS 1006	4	4
Organic solvents ISO 105 X05	4	4
Static charge ISO 6356	2,0 kV	2,0 kV
Slip Resistance EN 13893	DS	DS
Yarn construction	Velour	Velour
Design	Graphic	Graphic
Colours	5	5
Suitability for stairs EN 1963	Intensive use	Intensive use
Suitability for castor chairs EN 985	Intensive use	Intensive use
Primary backing	nonwoven PET/PA	nonwoven PET/PA
Declaration of Performance	Available	Available

 Excluding loose-laid mats  
EN 14051:2004

\* Sand Absorption Class 3: ≥90%, Sand Absorption Class 2: 80% ≤ class 2 < 90%, Sand Absorption Class 1: ≤80% \*\* Optical Class: 5 is best, 1 is lowest \*\*\* All listed dimensions include a PVC edge of 2.5 cm. The roll lengths are an indication. Delivered length can be up to 15% higher or lower. Installation and maintenance advice is available on our website.

## PURA<sup>BACKING</sup>

Pura Backing™ is a unique Rinos product innovation, developed by our R&D department. It's the Rinos answer to increasing demand for more environmentally friendly and sustainable entrance mat solutions by avoiding the use of PVC and plasticisers. Mats with Pura Backing™ meet this requirement – with zero PVC and plasticiser content, avoiding stains on porous subfloors. Thanks to increased flexibility, it is even easier to install!

## Pattern Repeat

Pattern	Width	Length
Grafic Comb 064	7,4 cm	10,1 cm
Grafic Rings 062	7,4 cm	13,5 cm
Grafic Squares 063	3,7 cm	3,6 cm
Grafic Stone 061	33,3 cm	65,6 cm
Grafic Grid 065	7,4 cm	7,2 cm

## Contact us for more information

Our employees are ready to answer questions or to take your orders. **Call +31 38 385 35 00** or mail [customerservice@rinos.com](mailto:customerservice@rinos.com)

## Where to use?

	high traffic	medium traffic
Not combined with outdoor matting (scrapping)	<b>A</b>	<b>B</b>
Combined with outdoor matting (absorbing)	<b>C</b>	<b>D</b>
Outdoor matting	<b>E</b>	

© Rinos B.V.